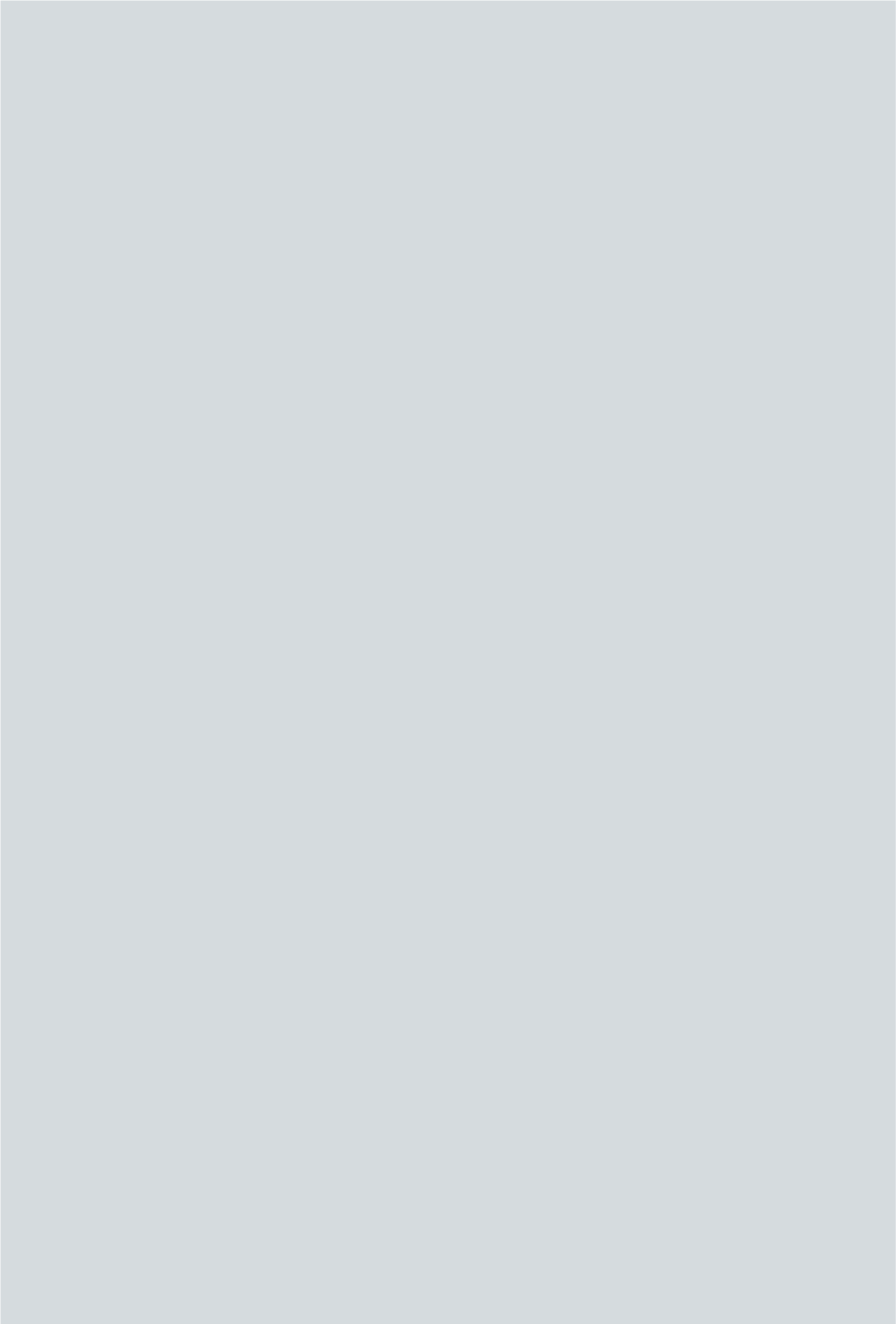


TEMPUS

THE TURNER COPPERSTONES



Inspired by the Classic New York Brownstones,
This is Tempus, the Turner Copperstones.

A HOME OF PURPOSEFUL ARCHITECTURAL INTENT

Tempus represents the introduction of a terrace typology for the Canberra housing market akin to the much adored examples of terrace housing in London or New York. The façades are purposefully not ornamented with decoration. Instead, they are classically proportioned and feature enduring materials such as face-brick and copper cladding.

Tempus is designed for living: to create dwellings that are light-filled, cross-ventilated and have a generosity of space and amenity. Tempus has gone to great lengths to exploit views out to the established landscapes of David and Forbes Streets. Existing mature trees and boundary hedges have been retained on site, making it a real alternative for those choosing to live close to the city, while still enjoying a quiet, leafy setting. The intention is for the buildings to age gracefully and set a new benchmark for housing in the ACT.

CHRIS MILLMAN
SENIOR ARCHITECT - COX



FIG 1. FORBES ST PRESENCE
initial architect intent sketch



Tempus represents the introduction of a terrace typology for the Canberra housing market akin to the much adored examples of terrace housing in London or New York. The façades are purposefully not ornamented with decoration. Instead, they are classically proportioned and feature enduring materials such as face-brick and copper cladding.

**REDEFINING THE
PINNACLE OF FORBES ST**

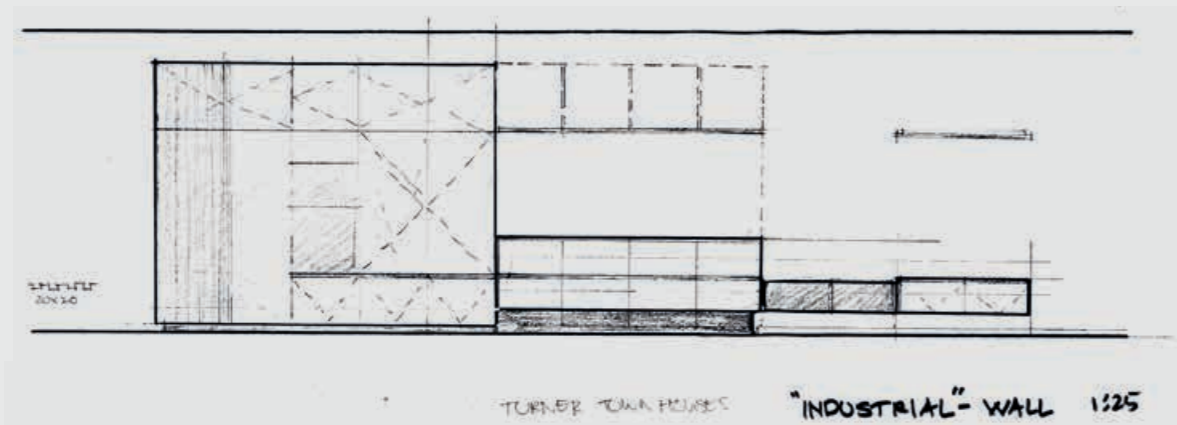
Tempus represents the introduction of a terrace typology for the Canberra housing market akin to the much adored examples of terrace housing in London or New York. The façades are purposefully not ornamented with decoration. Instead, they are classically proportioned and feature enduring materials such as face-brick and copper cladding.



Tempus.

A timeless facade
utilising timeless materials





UNPRETENTIOUS, RESTRAINED, & TIMELESS.

e refined. Polished concrete flooring is the strong ground floor foundation which has an integrity and 'envelop' approach, leaving the style and overall living to the owners. A light and dark scheme offer a style choice for the bold or minimal. Bathrooms are extremely functional with family living in mind however the warmth and drama of the finishes create a hint of luxury

NINA EXARHOS

SENIOR INTERIOR DESIGNER - COX



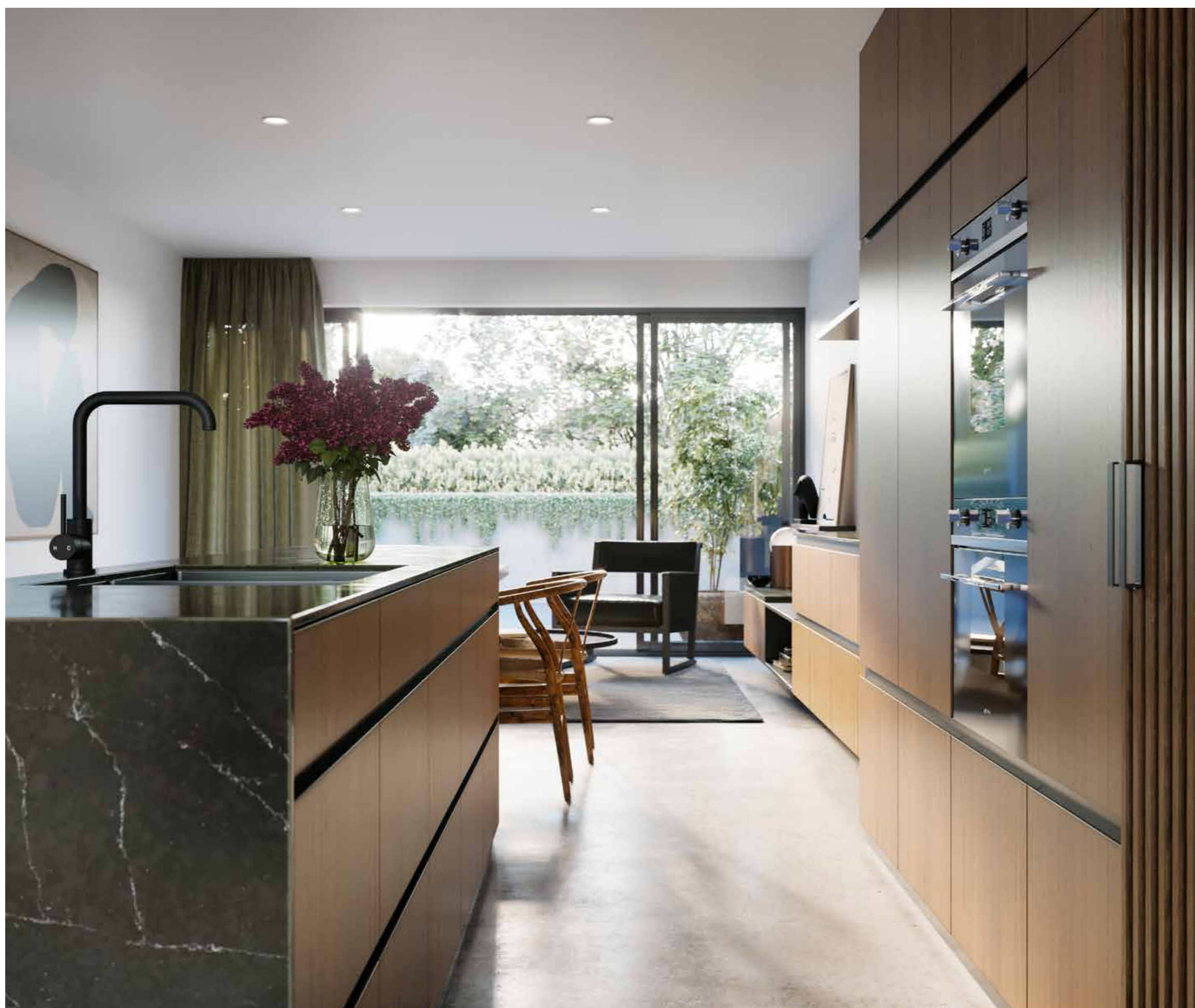






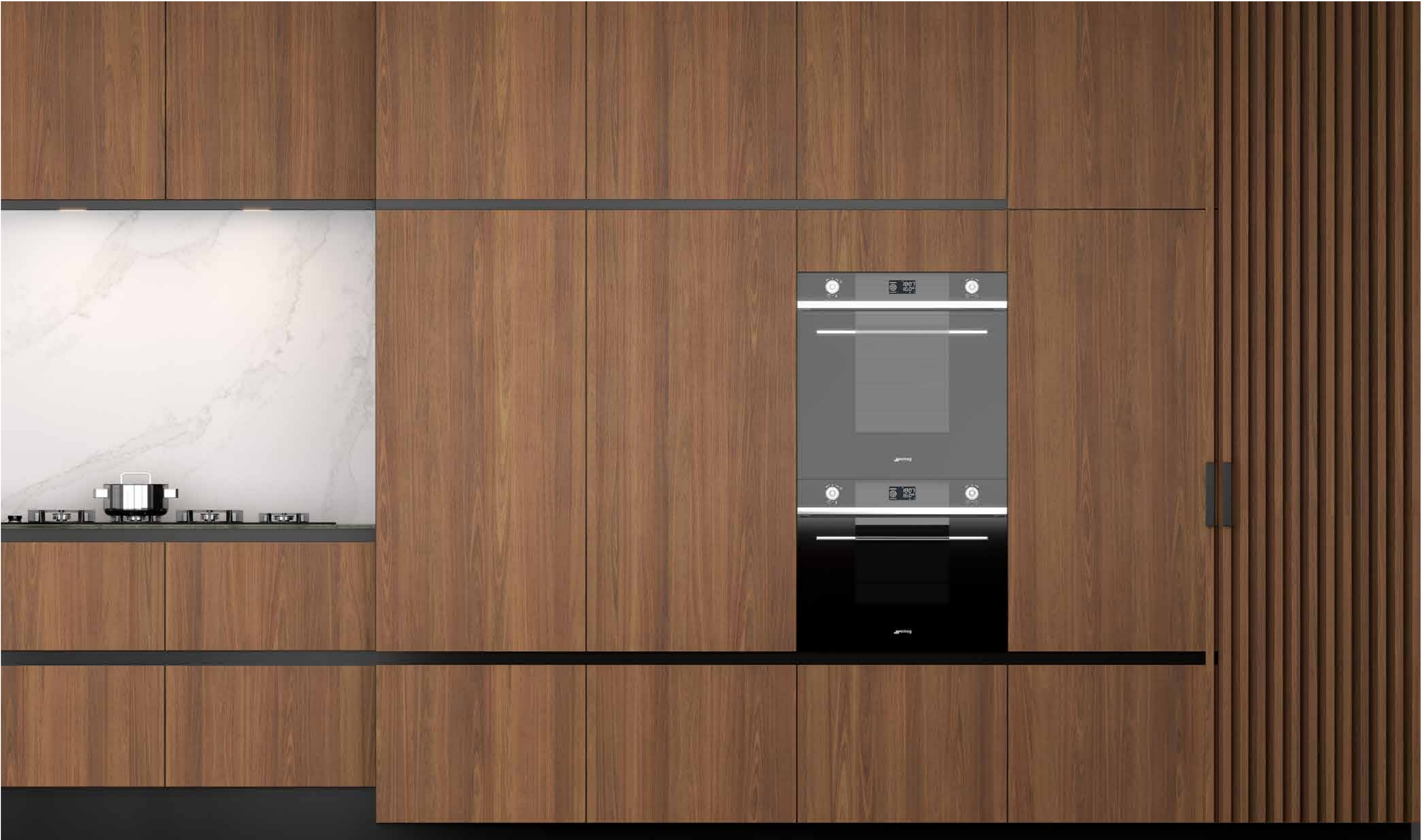


Tempus — Stella
Kitchen
Residences: 2 / 18 / 19
Finish: Day

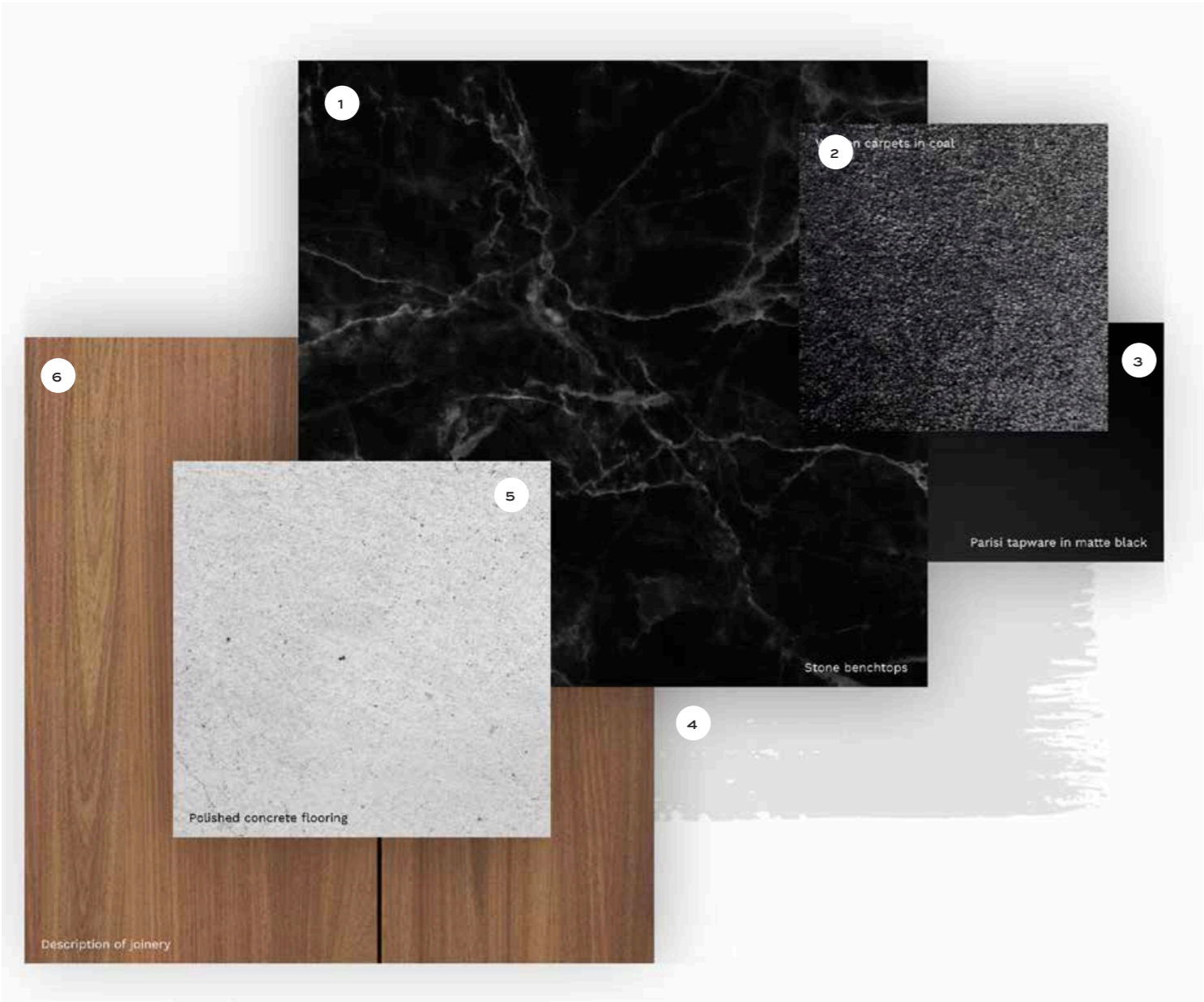


Tempus \ Aurora
Kitchen and sitting
Residences 3 \ 4 \ 14 \ 15 \ 16 \ 17
Finish: Night

Tempus \ Aurora
Kitchen and sitting
Residences 3 \ 4 \ 14 \ 15 \ 16 \ 17
Finish: Night

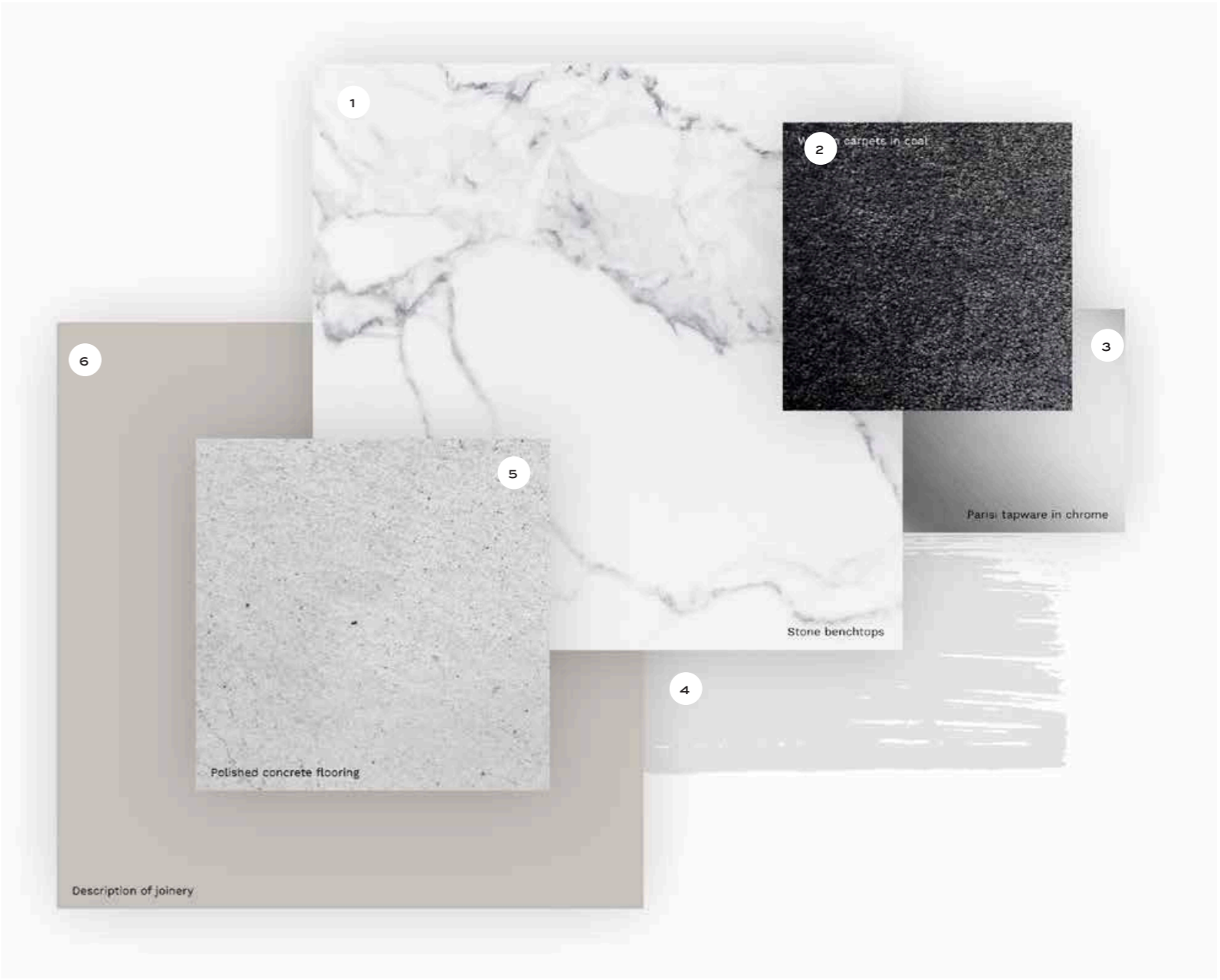


TEMPUS \ NIGHT



- 1. Kitchen Bechtop — Silestone by Cosentino - Doradus
- 2. Carpet — Cavalier Bremworth - Lisburn Holland
- 3. Parisi Tapware — Matt Black
- 4. Wall Colour — Dulux Snowy Mountains Half
- 5. Bathroom Tile — Rivoland - Cornerstone
- 6. Kitchen Joinery — Polytec - Nataio Walnut - Woodmatt
- 7. Splashback — Silestone by Cosentino - Calacatta Gold

TEMPUS \ DAY

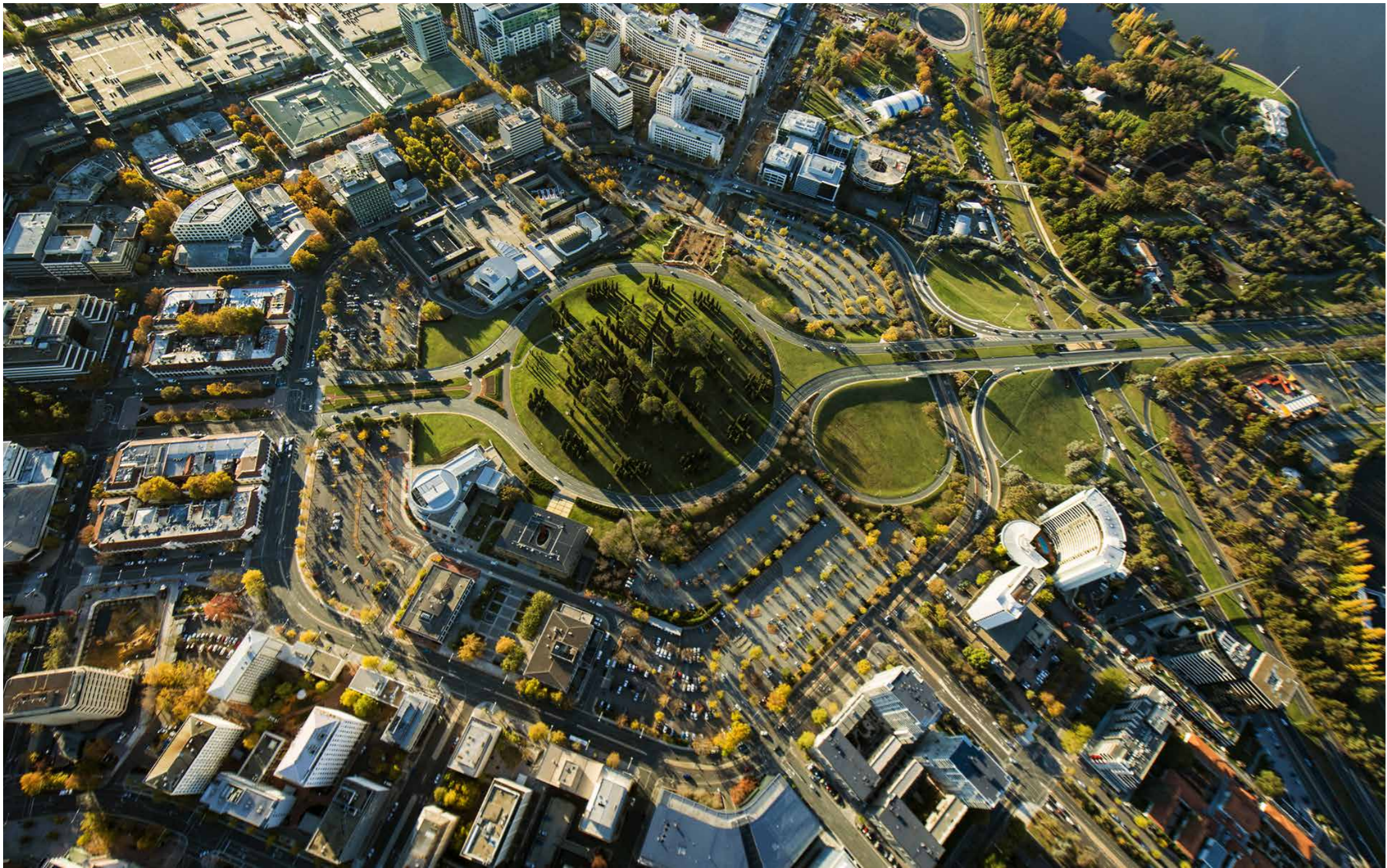


- 1. Kitchen Bechtop — Silestone by Cosentino - Calacatta Gold
- 2. Carpet — Cavalier Bremworth - Lisburn Damask
- 3. Parisi Tapware — Chrome
- 4. Wall Colour — Dulux Snowy Mountains Half
- 5. Bathroom Tile — Rivoland - Cornerstone
- 6. Kitchen Joinery — Polytec - Serene Iagato
- 7. Splashback — Silestone by Cosentino - Calacatta Gold

TEMPUS

THE LOCATION

THE TURNER COPPERSTONES



TEMPUS
A LOCATION WHERE TIME IS
OF THE ESSENCE

CONNOISSEUR HOTSPOTS & GENUINE
CAFÉ CULTURE NESTLED IN THE BEND OF THE RIVER

For a neighbourhood that adjoins the CBD, New Farm has a surprisingly welcoming village feel. It's the combination of tree lined streets, connoisseur hotspots and genuine café culture along with refreshing river breezes and green open spaces that make New Farm one of the most exclusive and sought-after of Brisbane's inner-city suburbs.

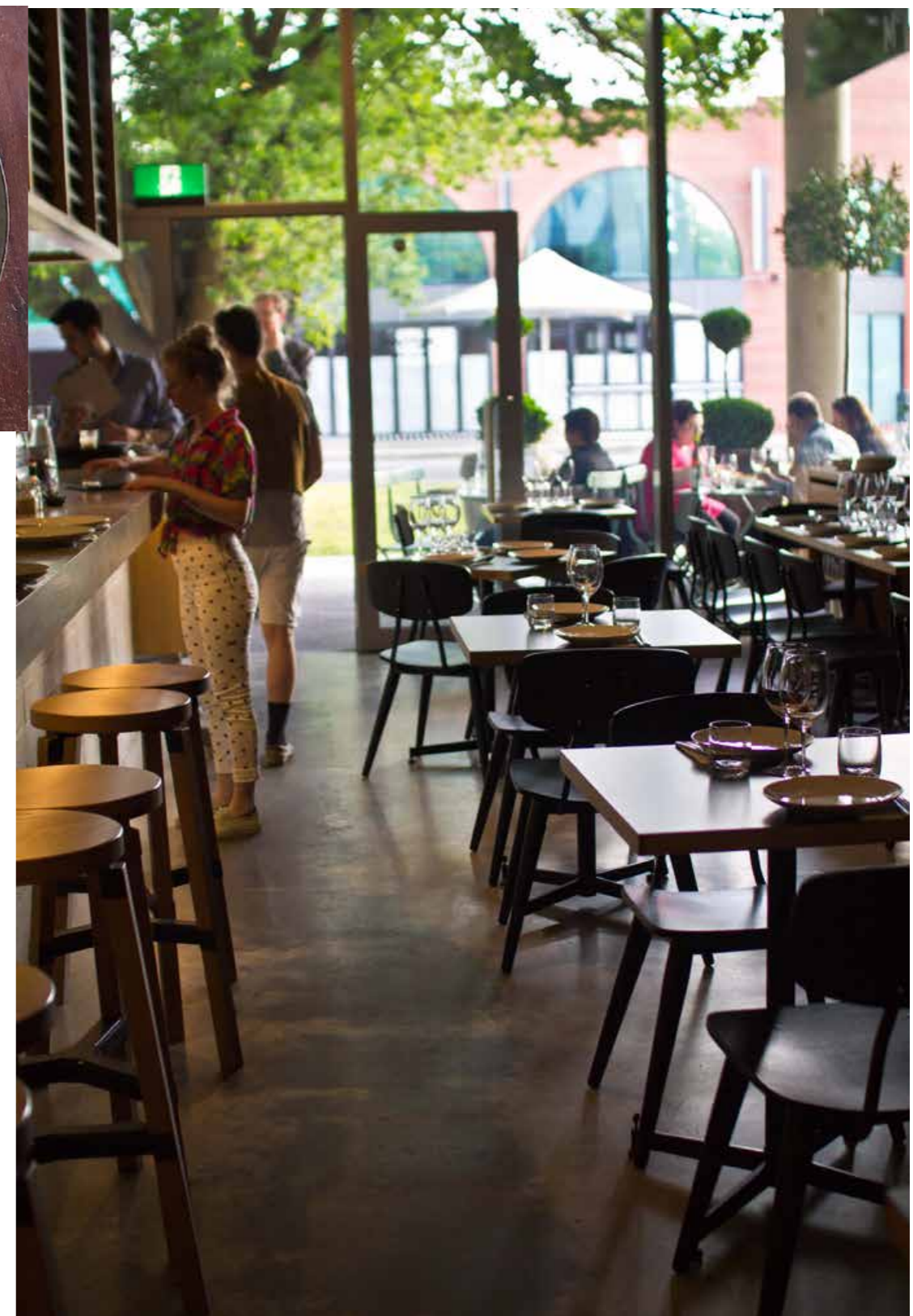
Whether it's a morning run along the Riverwalk to Howard St Wharves. A coffee and some shopping at Merthyr Village. Some fun and games in the fields of new farm park, a fix of culture and entertainment at the Powerhouse or a visit to the James Street shopping and dining precinct, this is an address that puts adventure on your doorstep and every-day convenience at your fingertips.





For a neighbourhood that adjoins the CBD, New Farm has a surprisingly welcoming village feel. It's the combination of tree lined streets, connoisseur hotspots and genuine café culture along with refreshing river breezes and green open spaces that make New Farm one of the most exclusive and sought-after of Brisbane's inner-city suburbs.

Whether it's a morning run along the Riverwalk to Howard St Wharves. A coffee and some shopping at Merthyr Village. Some fun and games in the fields of new farm park, a fix of culture and entertainment at the Powerhouse or a visit to the James Street shopping and dining precinct, this is an address that puts adventure on your doorstep and every-day convenience at your fingertips.





Whether it's a morning run along the Riverwalk to Howard St Wharves. A coffee and some shopping at Merthyr Village. Some fun and games in the fields of new farm park, a fix of culture and entertainment at the Powerhouse or a visit to the James Street shopping and dining precinct, this is an address that puts adventure on your doorstep and every-day convenience at your fingertips.



TEMPUS
A LOCATION WHERE
TIME IS OF THE ESSENCE

ALINGA LIGHT RAIL STOP

ALEURA ST LIGHT RAIL STOP

IPIMA ST LIGHT RAIL STOP

MACARTHUR AVENUE LIGHT RAIL STOP









TEMPUS

THE SITEPLAN

THE TURNER COPPERSTONES

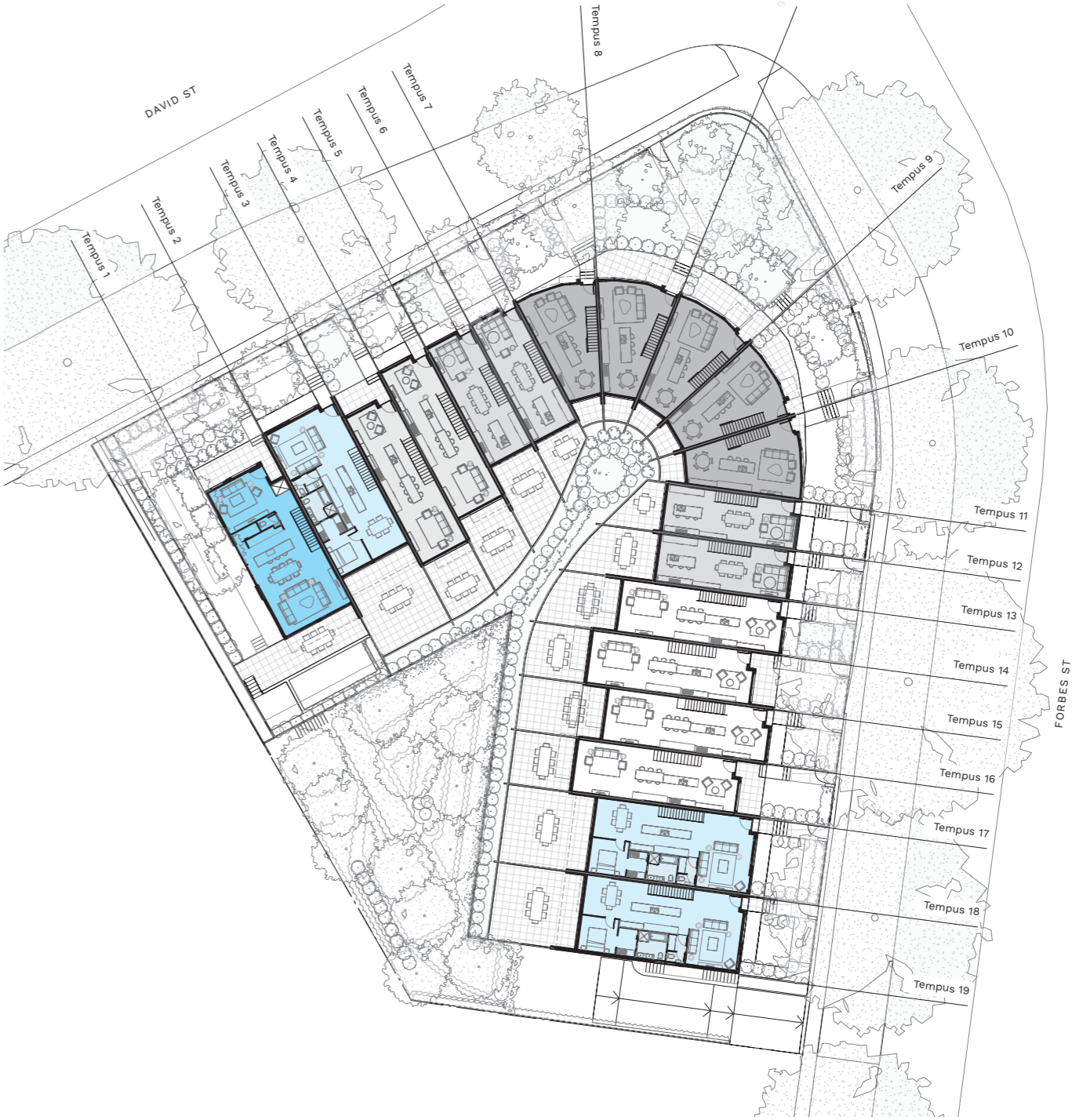
TEMPUS \ GROUND

Aurura Lata		Solis	
Aurora		Stella	
Meridien		Magna	

0 4 8 16m



North



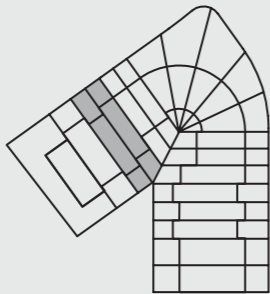
TEMPUS

THE RESIDENCES

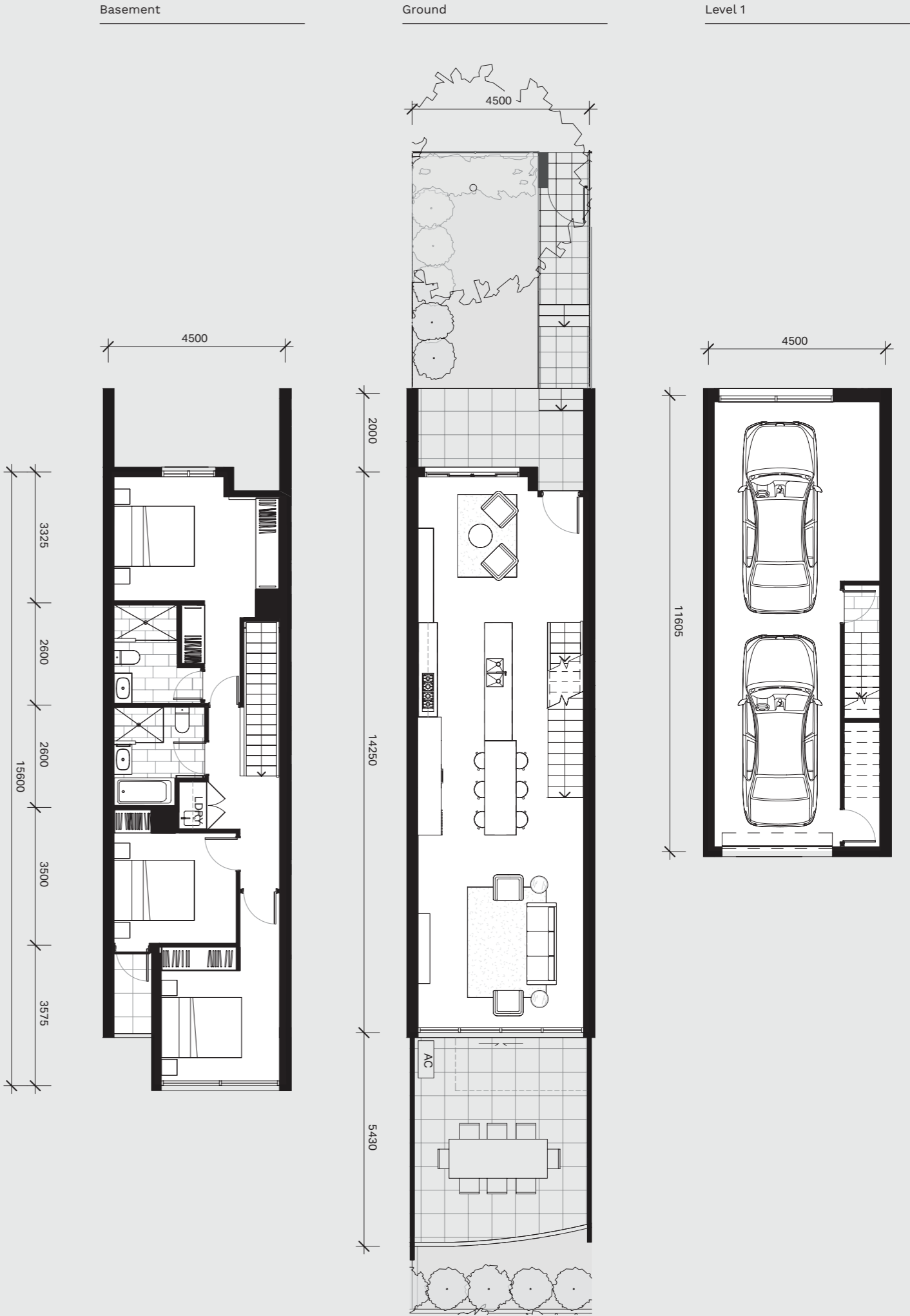
THE TURNER COPPERSTONES

TEMPUS \ AURORA

Townhouse No:	3 4	Living (m²)	125.5
Bedrooms	3	Garage (m²)	54
Bathrooms	2	Balconies (m²)	2
Carspaces	2	Front Courtyard (m²)	26-33
		Rear Courtyard (m²)	25-26

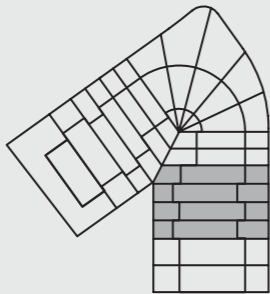


North

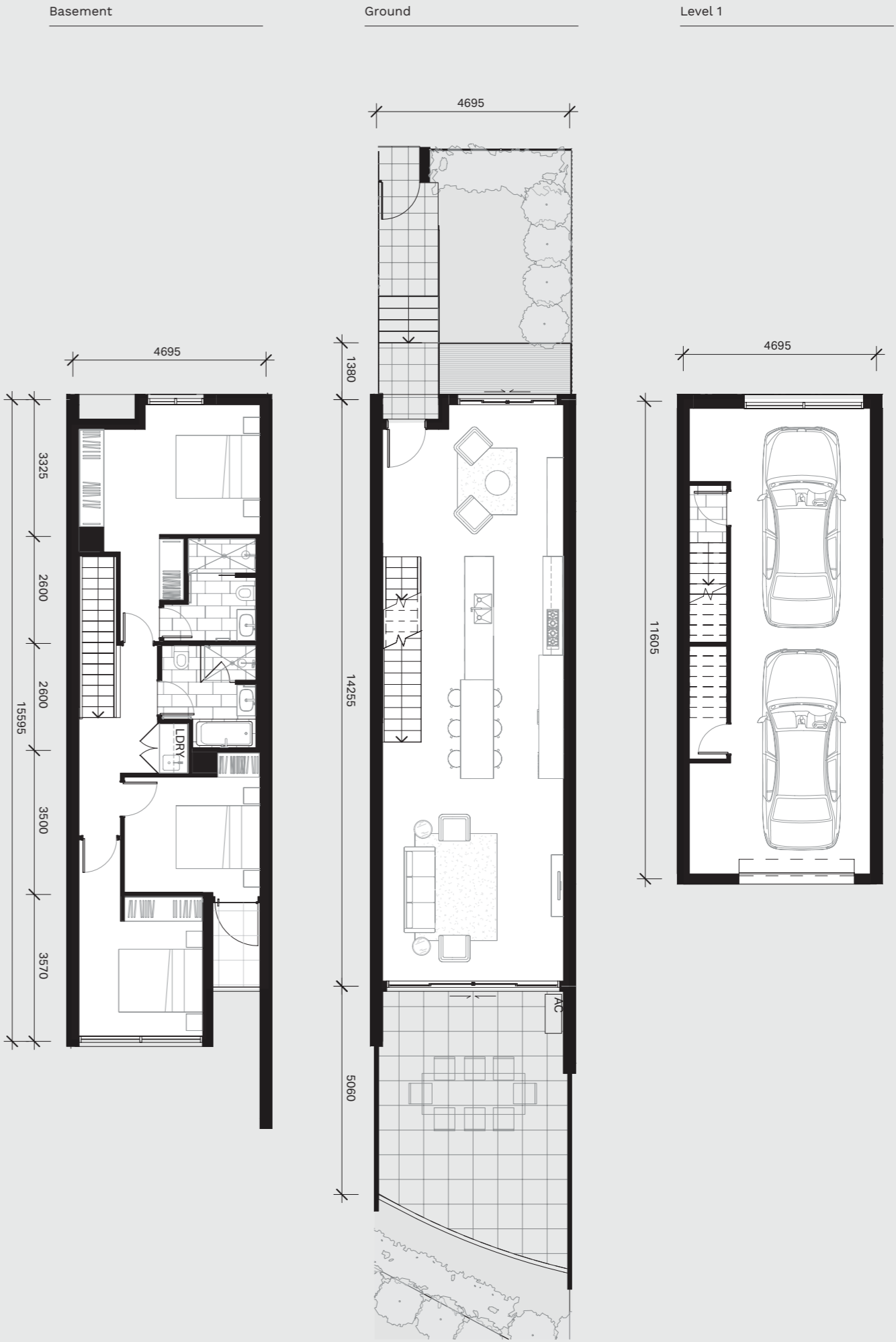


TEMPUS \ AURORA.LATA

Townhouse No: 14 15 16 17		Living (m²)	129
Bedrooms	3	Garage (m²)	54
Bathrooms	2	Balconies (m²)	2.5
Carspaces	3	Front Courtyard (m²)	27-34
		Rear Courtyard (m²)	26-33

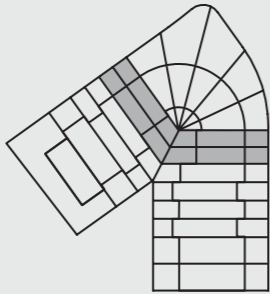


North

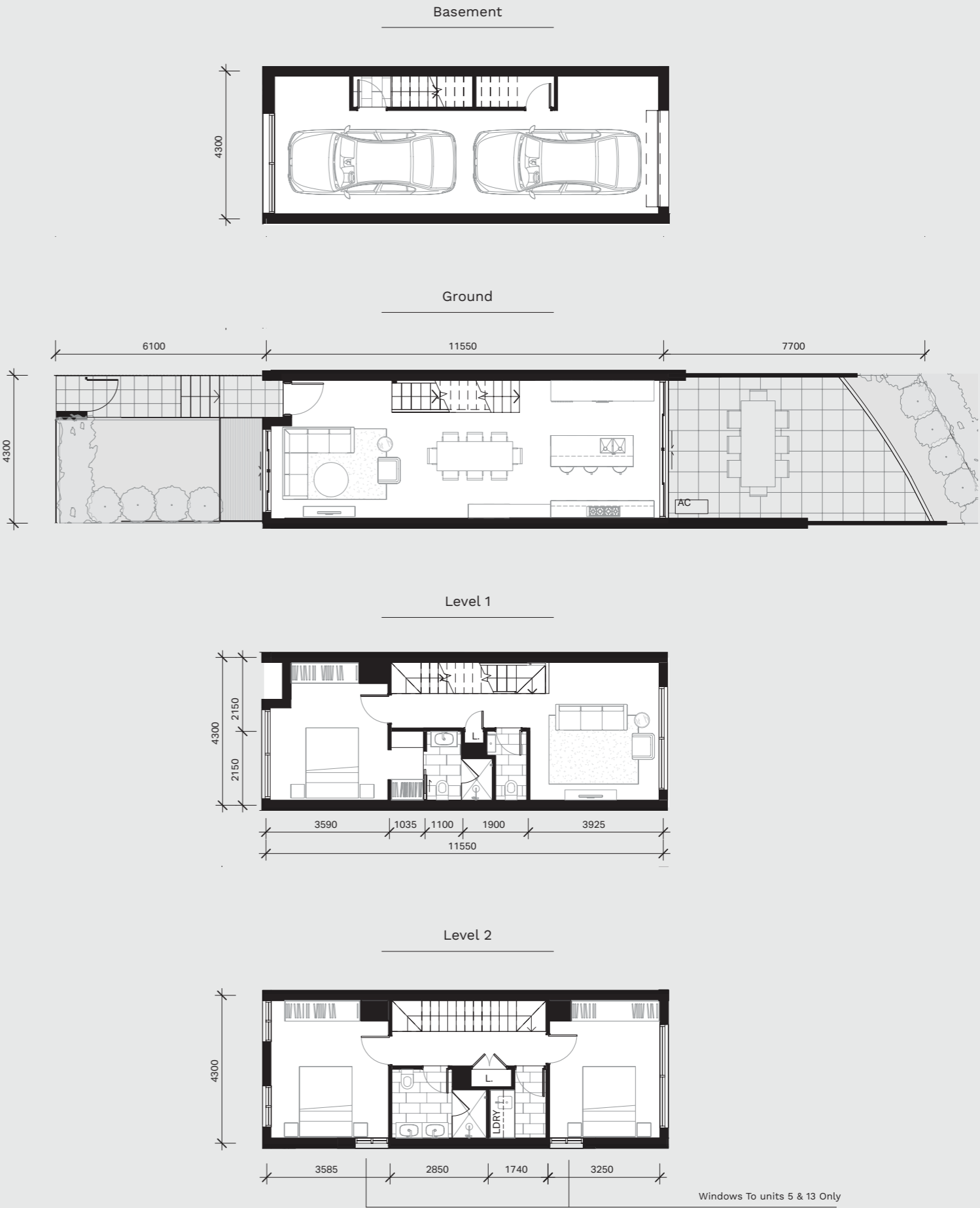


TEMPUS \ MERIDIAN

Townhouse	No: 5 6 12 13	Living (m²)	139
Bedrooms	3	Garage (m²)	51
Bathrooms	2.5	Front Courtyard (m²)	25
Carspaces	2	Rear Courtyard (m²)	13-26

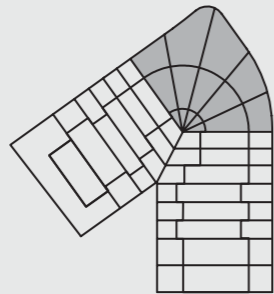


North



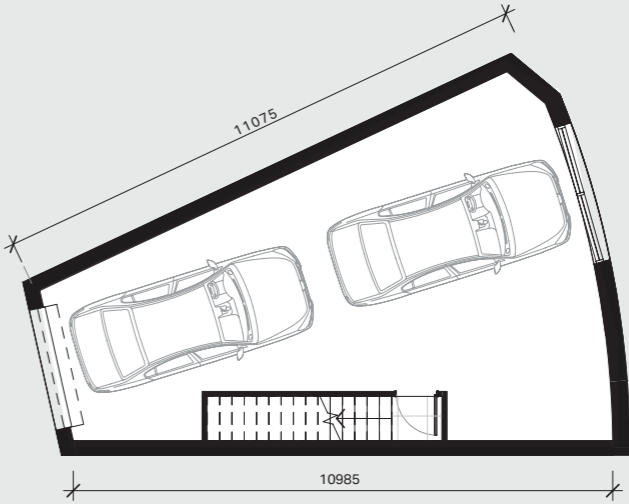
TEMPUS \ SOLIS

Townhouse No:	7 8 9 10 11	Living (m ²)	141.5
Bedrooms	4	Garage (m ²)	53-66.5
Bathrooms	2.5	Balconies (m ²)	1-6.5
Carspaces	2	Front Courtyard (m ²)	55-125
		Rear Courtyard (m ²)	5

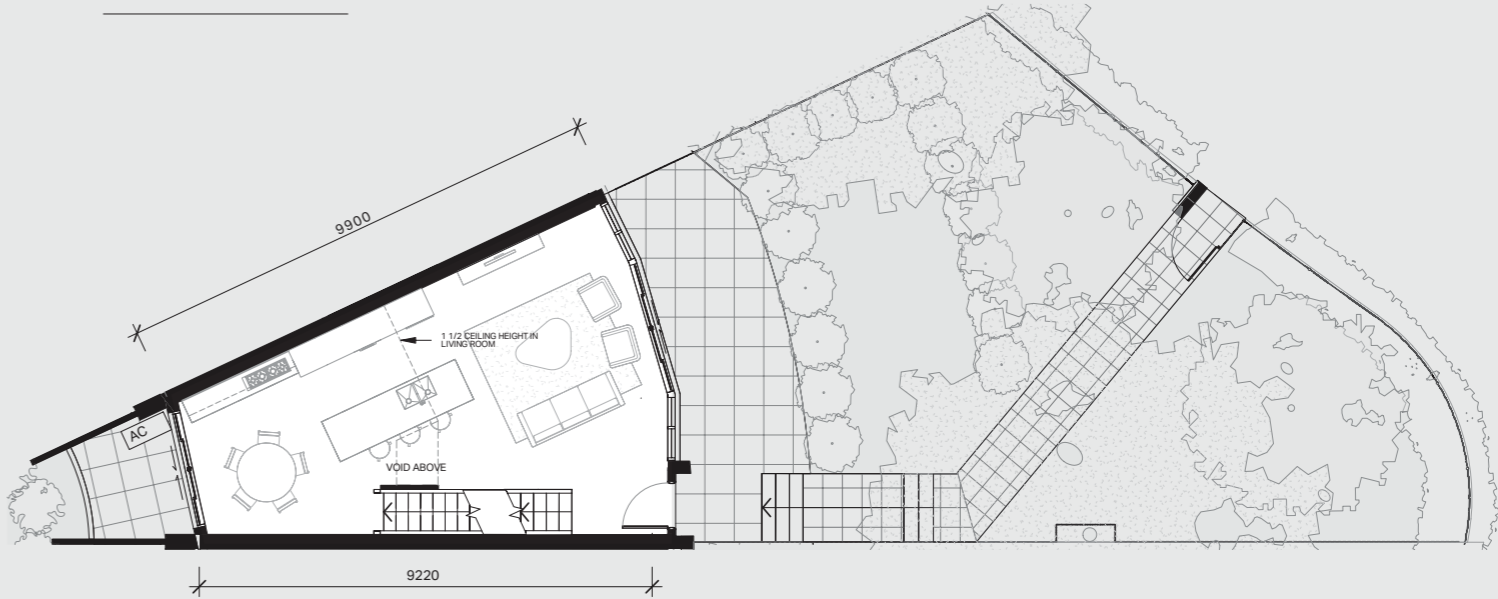


North

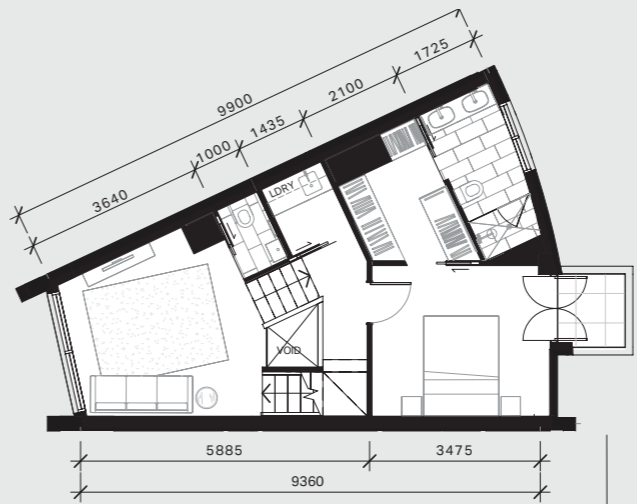
Basement



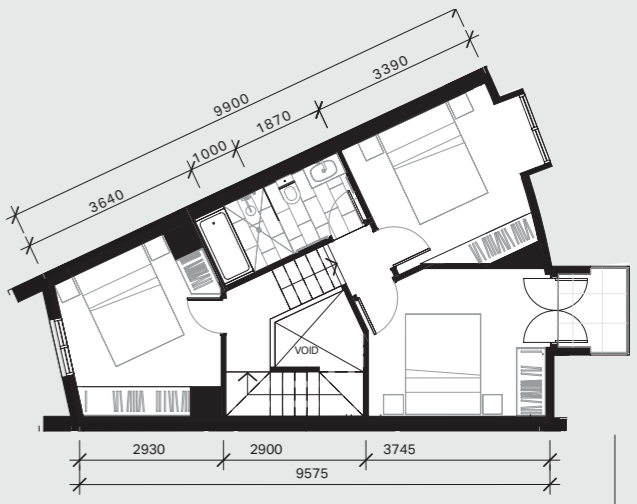
Ground



Level 1



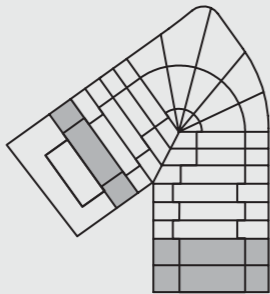
Level 2



Balcony depth varies as per site plan

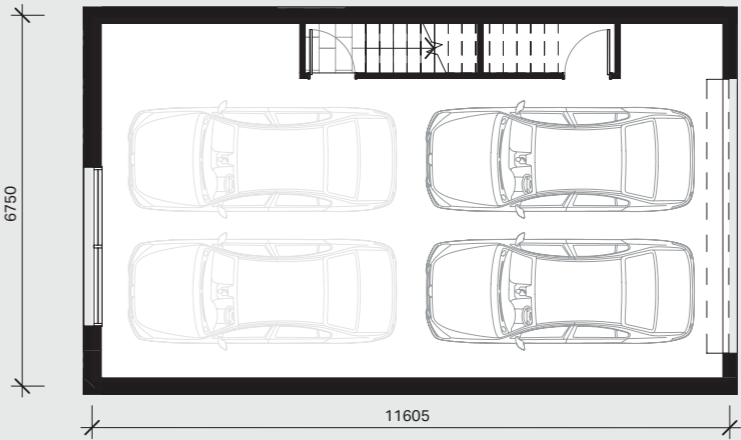
TEMPUS \ STELLA

Townhouse No:	2 18 19	Living (m²)	177
Bedrooms	4	Garage (m²)	80.5
Bathrooms	3.5	Balconies (m²)	10
Carspaces	4	Front Courtyard (m²)	40
		Rear Courtyard (m²)	48

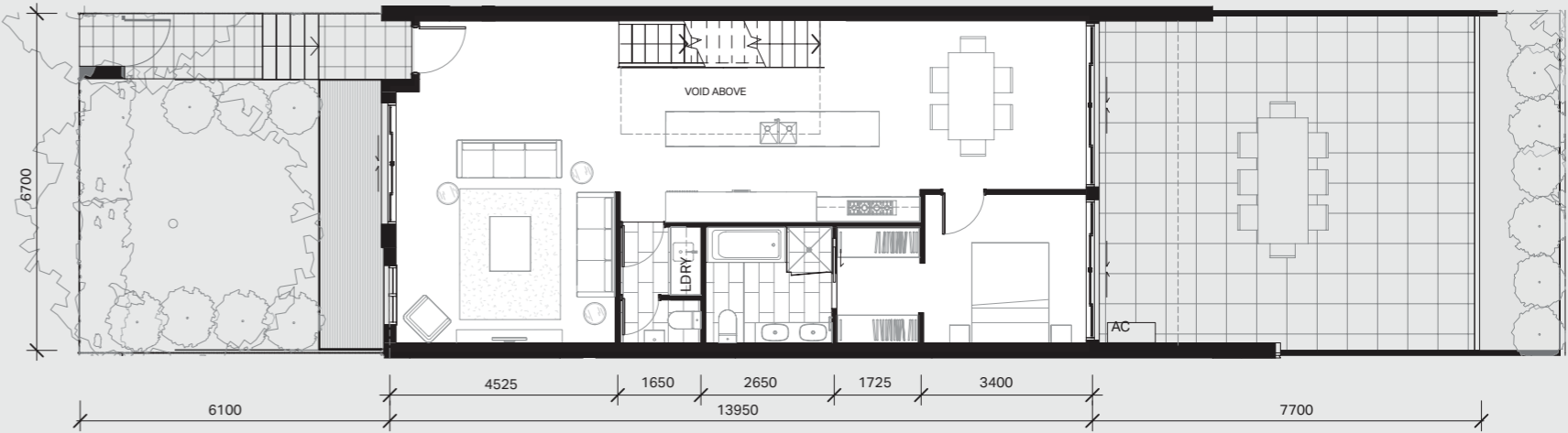


North

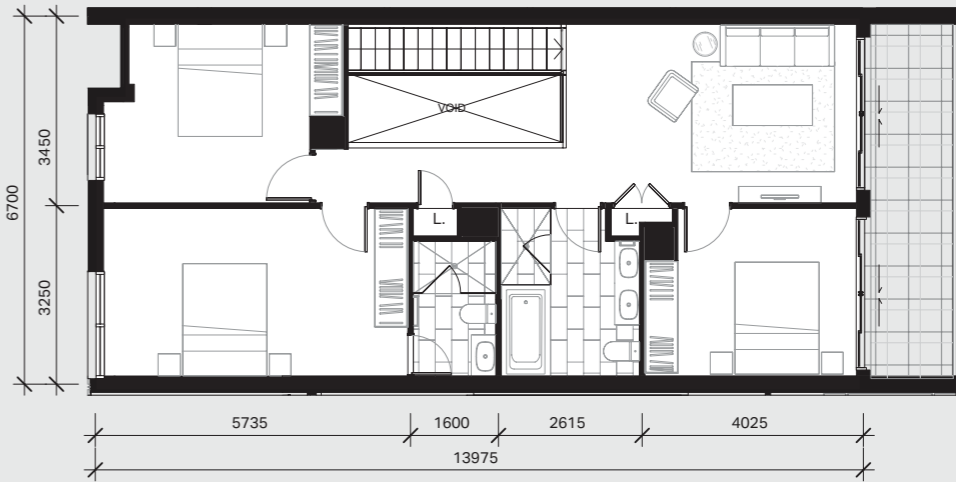
Basement



Ground



Level 1



TEMPUS

THE INCLUSIONS

THE TURNER COPPERSTONES



For 70 years Smeg has lead the way in appliance design and manufacture, with the belief that customers should be able to express their personality through design, and much like art, appliances should be selected on the basis of personal taste. This philosophy gave rise to Smeg's long history of collaborations with world-leading architects and designers, creating aesthetic collections to suit different styles and tastes. Smeg is the only appliance brand to offer genuine design choice, allowing customers to select appliances like works of art.

Smeg Linea

Distinctive products that incorporate modern minimalist design trends, the Linea aesthetic is characterised by symmetrical lines, balance and light. A series of ovens, coffee machine, hobs, hoods, fires and accessories are all extremely ergonomic and designed to maximise the available space, any combination will make a real style statement in the kitchen.



TEAM

BOND/IMAGINE/COX/
MCGRATH

This document has been prepared by QM Properties and Colliers International for advertising and general information only. QM Properties and Colliers International does not guarantee, warrant or represent that the information contained in this document is correct. Any interested parties should undertake their own enquiries as to the accuracy of the information. QM Properties and Colliers International excludes unequivocally all inferred or implied terms, conditions and warranties arising out of this document and excludes liability for loss and damage arising there from.

